

SAIL AREAS AND DIMENSIONS				
SAIL	LUFF	LEECH	FOOT	AREA
MAIN	10910 35.8'	11280 37'	3690 12.1'	29.8sq.m. 321 sq.ft.
JIB	9175 30.1'	8200 26.9'	3780 12.4'	16.3sq.m. 175 sq.ft.
SCREACHER	10360 34'	8750 28.7'	7190 23.6'	33.3sq.m. 358 sq.ft.
SPINN'R	12250 40.2'	10910 35.8'	8410 27.6'	72.5sq.m. 780 sq.ft.

NOTES:

Square Top Mainsail as shown is required to be Class legal. Roach to be no more than 14" and 28" where shown.

Mainsail is designed to be almost flush with the top of the mast as shown – do not shorten luff, which has cutout as shown for halyard clearance.

Vertical Batten to be used at head to ensure head stands vertical.

Tack cutaway to be as shown.

Mainsail has 2 sets of reefpoints, first set positioned as shown, second set optional.

Mainsail to have Cunningham eye fitted.

Class emblem located and sized as shown.

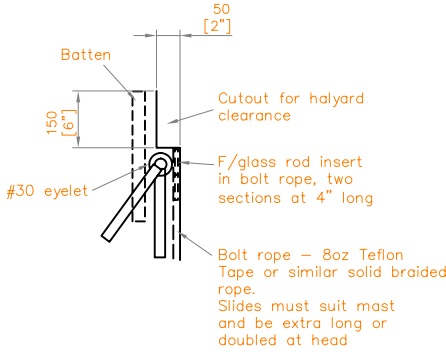
Mainsail battens to be parallel with boom or only slightly angled up as shown for easy roller furling. Upper battens to have more angle as shown.

Jib to have four leach battens placed at equal distance on leach.

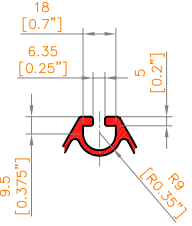
Jib hanks to be for 9/32" wire.

All sails are to be fitted with telltales.

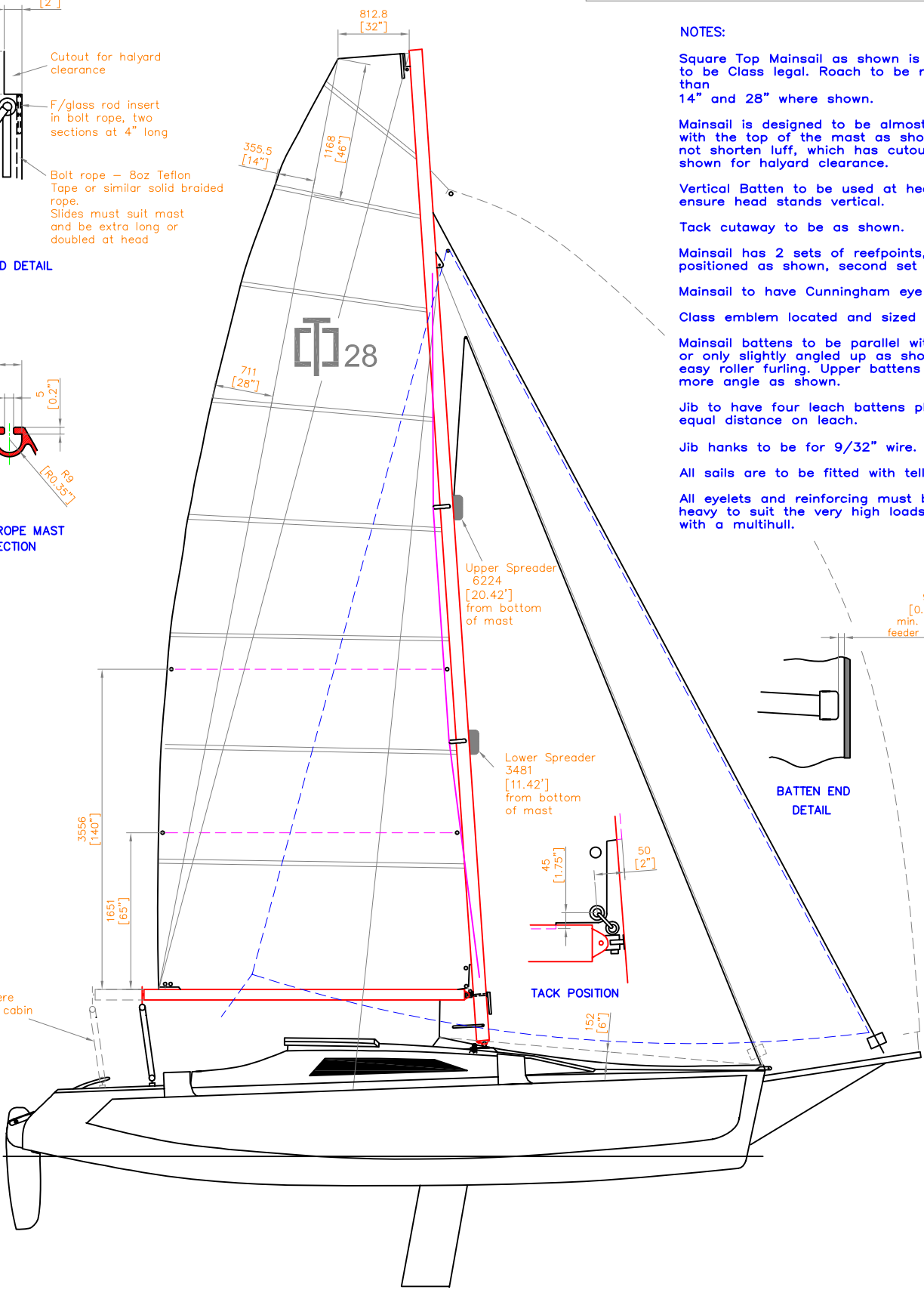
All eyelets and reinforcing must be extra heavy to suit the very high loads possible with a multihull.



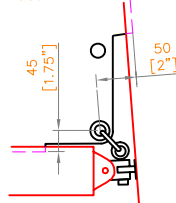
HEAD DETAIL



BOLT ROPE MAST SECTION



BATTEN END DETAIL



TACK POSITION

Sheet here with aft cabin version

28RS/28CR/28CE SAILPLAN



website: corsairmarine.com
email: corsair@corsairmarine.com